



## SEMINARS AT "LES LOGES DU PARC" \* \* \* \*

THE IDEAL PLACE FOR SEMINARS AND EVENTS

### ■ BUSINESS MEETINGS



#### Study day

Welcome coffee, fully equipped business room, gourmet break, lunch (3 courses beverage incl.).  
From €51 per person, excluding taxes.



#### Semi-residential seminar

Fully equipped room, 2 gourmet breaks, 1 meal (3 courses beverage incl.), 1 night based on a single room, 1 breakfast.  
From €127 per person, excluding taxes.



#### Residential seminar

Fully equipped, 3 gourmet breaks, 2 meals (3 courses beverage incl.), 1 night based on a single room, 1 breakfast. From €163 per person, excluding taxes.

### ■ ACCOMODATION AND RESTAURANT

- Charming hotel, for human-sized business meetings. Our team will completely take care of you.
- Hotel rooms for absolute comfort or beautiful apartments if you care of your budget.
- Access to the outside swimming pool with thermal water, fitness area, billard table, table tennis, bikes...
- Free Wifi

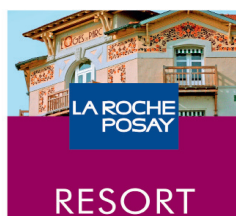
•The «spécial Groupe» menu is composed by season product our «seminar» option : offer a variety of 2 or 3 courses + mineral water, wines selected by our «Maitre d'hotel» according to your menu. Coffee or Tea.



### ♥ OUR FAVORITES

- After work head at "Spa Source la Roche-Posay" from €31 per person, excluding taxes. Based on a sensorial hydromassage bath treatment or a jet shower with an access to the "Carré des Sources" (bath, sauna, hammam, Jacuzzi...)
- 18-hole Golf
- Casino

LES LOGES DU PARC\*\*\*  
10 place de la république 86270 La Roche-Posay  
[www.resorthotel-larocheposay.com](http://www.resorthotel-larocheposay.com)



HOTELS SPA GOLF

Contact us / Ask for an estimate  
Service commercial- +33(0)5 49 19 40 60  
[service.commercial@la-roche-posay.info](mailto:service.commercial@la-roche-posay.info)  
By car : A10 Paris-Bordeaux, exit 26  
Châtelleraut Nord  
By train : From Paris Montparnasse to  
Châtelleraut train station, 1 hour and 30  
minutes by French TGV train